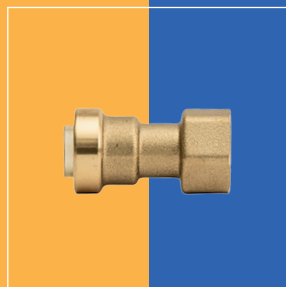
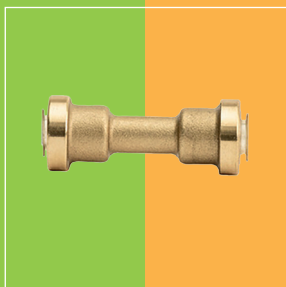
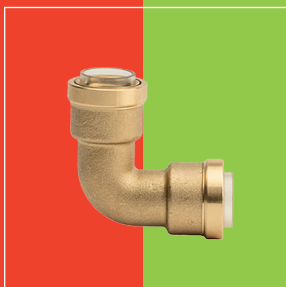


INSTALLATION INSTRUCTIONS

Rapid-O[®]



VISIT WWW.RAPID-O.BE



www.rapid-o.be



Rue de la Royenne 84
7700 Mouscron, Belgium
www.castel-engineering.com



**Rapid-O-90°
Elbow**

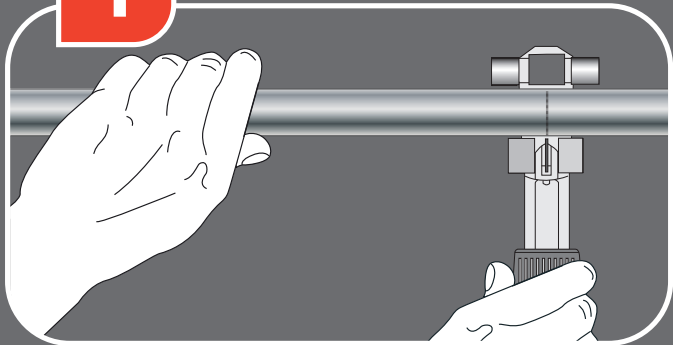


**Rapid-O
Unit Socket**



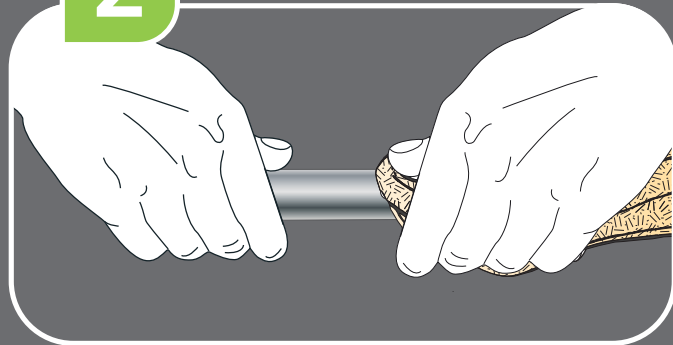
**Rapid-O
Connection
Piece**

1 CUT IT



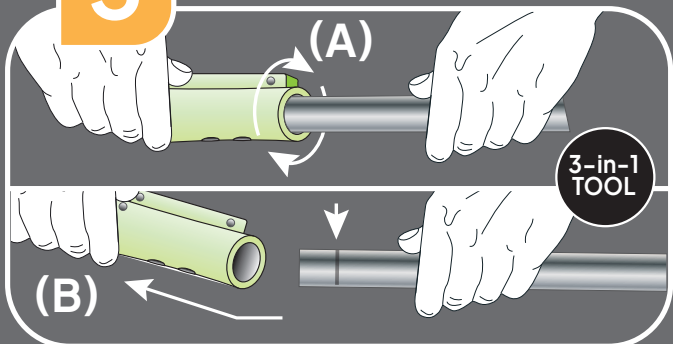
CUT THE TUBE TO LENGTH SQUARELY

2 CLEAN IT



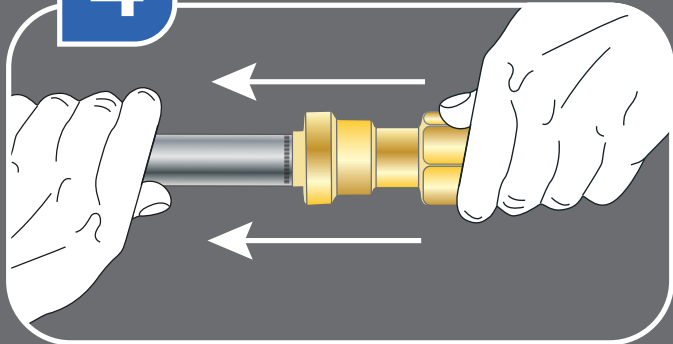
REMOVE DEBRIS FROM TUBE EXTERIOR WITH CLOTH OR WOOL IN ROTATING ACTION

3 PREPARE IT



CLEAN (A) INSIDE AND OUT AND MARK (B) INSERTION DEPTH

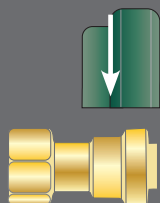
4 PUSH IT



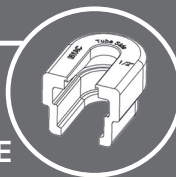
PUSH THE FITTING UNTIL INSERTION MARK REACHES THE END

**INSERTION
DEPTH**
1.06 in / 27 mm

REMOVAL



RELEASE
TOOL
SOLD SEPARATELY



VISIT WWW.RAPID-O.BE



Works only for copper

Warning! The Rapid-O® fittings can only be used with the following Refrigerant gases:
R134A, R404A, R290, R407A, R600A, R500, R22, R32, R410A, R407C.
Operating temperature range -40C° to +121 C° **Maximum pressure 60 Bar**



Rue de la Royenne 84
7700 Mouscron, Belgium
www.castel-engineering.com

When using refrigerants classified A2L (lower flammability), A2 (flammable) and A3 (higher flammability) additional/specific standards, local rules and regulations, codes of practice and by-laws may be applicable.



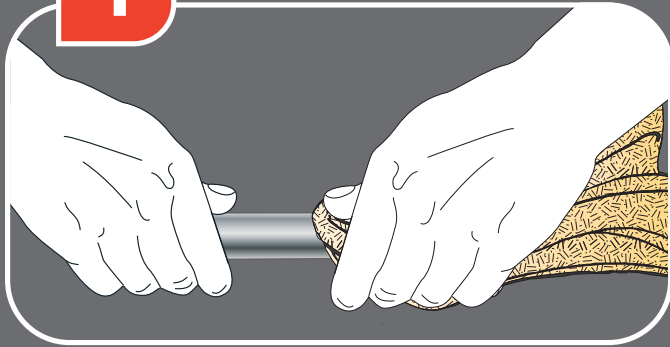


Rapid-O 1/4" X 3/8" Marking and Reamer Tool

Rapid-O 1/2" X 5/8" Marking and Reamer Tool

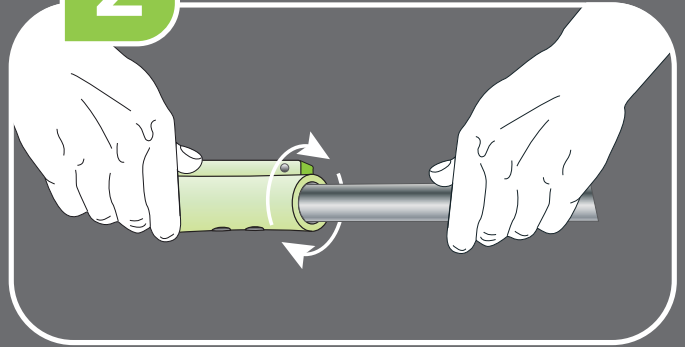
INSTRUCTIONS MARKING AND REAMER TOOL

1 CLEAN IT



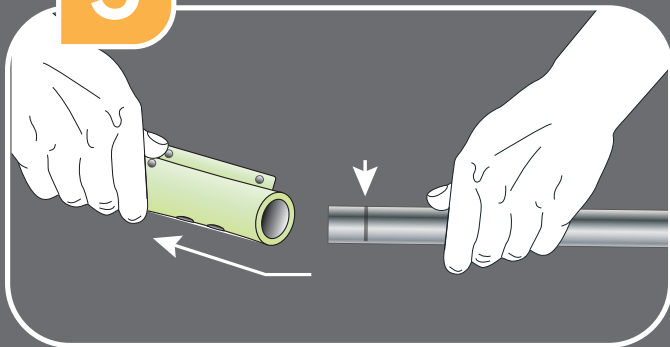
REMOVE DEBRIS FROM TUBE EXTERIOR WITH CLOTH OR WOOL IN ROTATING ACTION

2 PREPARE IT



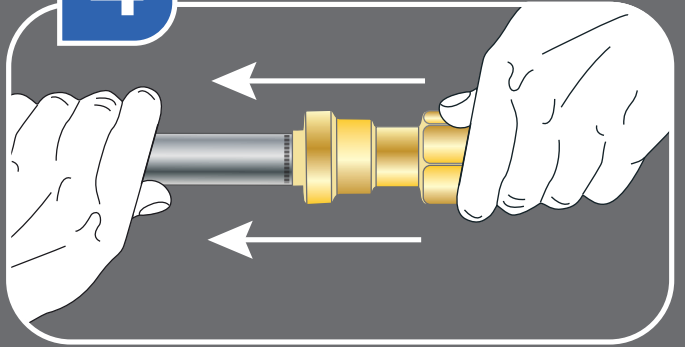
USE THIS TOOL TO DEBURR / CLEAN THE TUBE INSIDE AND OUT

3 MARK IT



USE THIS TOOL TO MARK THE INSERTION DEPTH ON THE TUBE

4 PUSH IT



THEN PUSH THE FITTING UNTIL INSERTION MARK REACHES THE END

RELATED PRODUCTS

- RAPID-O - 1/4" - 1/2" - 3/8" - 5/8" QUICK CONNECT 90° ELBOW
- RAPID-O - 1/4" - 1/2" - 3/8" - 5/8" QUICK CONNECT SOCKET
- RAPID-O - 1/4" - 1/2" - 3/8" - 5/8" QUICK CONNECT UNION
- RAPID-O - 1/4" - 1/2" - 3/8" - 5/8" QUICK CONNECT RELEASE TOOL

Works only for copper

Warning! The Rapid-O® fittings can only be used with the following Refrigerant gases:
R134A, R404A, R290, R407A, R600A, R500, R22, R32, R410A, R407C.
Operating temperature range -40C° to +121 C°

VISIT WWW.RAPID-O.BE



Rue de la Royenne 84
7700 Mouscron, Belgium
www.castel-engineering.com

When using refrigerants classified A2L (lower flammability), A2 (flammable) and A3 (higher flammability) additional/specific standards, local rules and regulations, codes of practice and by-laws may be applicable.





Rapid-O 1/4"



Rapid-O 3/8"

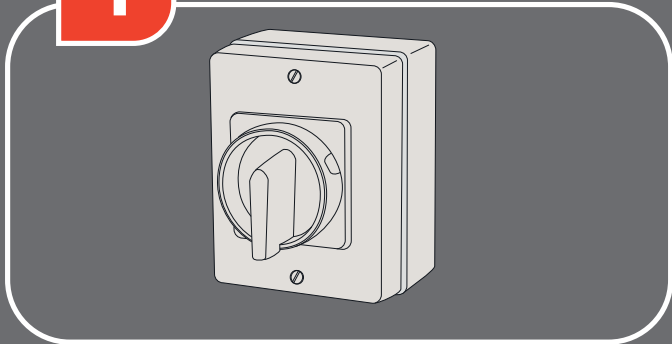


Rapid-O 1/2"



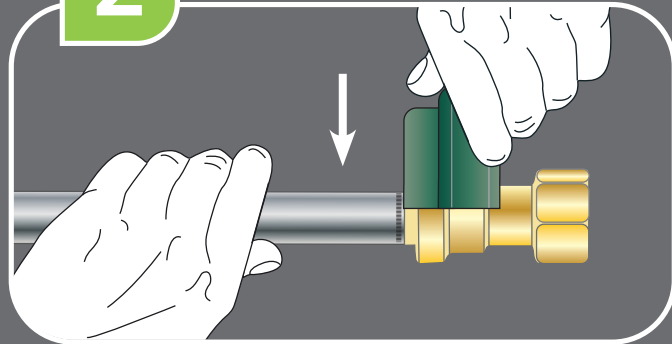
Rapid-O 5/8"

1 ISOLATE



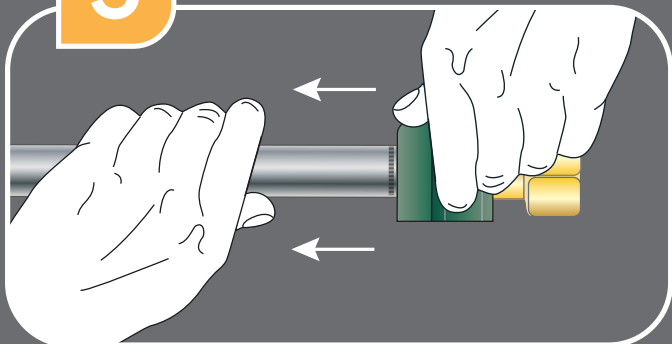
ISOLATE AND EVACUATE THE SYSTEM AND RELEASE VACUUM

2 PRESS



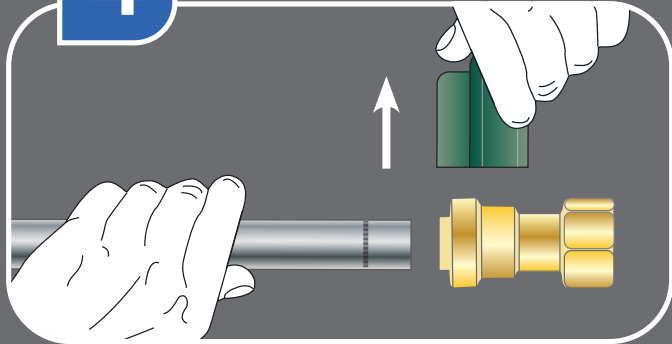
PRESS THE RELEASE TOOL OVER THE END OF THE FITTING

3 PULL IT



PULL THE TUBE OUT OF THE FITTING

4 REMOVE



REMOVE THE RELEASE TOOL FROM THE FITTING

RELATED PRODUCTS

- RAPID-O - 1/4" - 1/2" - 3/8" - 5/8" QUICK CONNECT 90° ELBOW
- RAPID-O - 1/4" - 1/2" - 3/8" - 5/8" QUICK CONNECT SOCKET
- RAPID-O - 1/4" - 1/2" - 3/8" - 5/8" QUICK CONNECT UNION
- RAPID-O - 1/4" - 1/2" - 3/8" - 5/8" HVAC QUICK CONNECT MARKING AND REAMER TOOL

Works only for copper

VISIT WWW.RAPID-O.BE



Warning! The Rapid-O® fittings can only be used with the following Refrigerant gases: R134A, R404A, R290, R407A, R600A, R500, R22, R32, R410A, R407C. Operating temperature range -40C° to +121 C°



Rue de la Royenne 84
7700 Mouscron, Belgium
www.castel-engineering.com

When using refrigerants classified A2L (lower flammability), A2 (flammable) and A3 (higher flammability) additional/specific standards, local rules and regulations, codes of practice and by-laws may be applicable.

